

eego™ mini-series product range

Amplifier specifications

Highlights	eego mini-series
Weight and dimensions (WxDxH)	<100 g, 86x100x16 mm
Inputs	8 DC coupled leads + REF & GND (24 bit)
Input noise and impedance	< 1.0 μV_{RMS} (lowest sampling rate and signal range), >1 G Ω
Input signal range	150 – 1000 mV _{PP} (programmable gain)
Maximum sampling rate	2048 Hz (512Hz/1024Hz/2048Hz and 500Hz/1000Hz/2000Hz)
Isolated trigger input (TTL)	2 bit TTL, electrically separated from patient lead
eego software requirements	2GB RAM working memory, MS Windows 8.1 or above, USB 2.0 connection for amplifier
SDK requirements	2GB RAM working memory, MS Windows 7, 8.1 (32bit, 64bit), 32 bit applications only, USB 2.0 connection for amplifier. Debian 8.x with g++ 4.9 compiler (32bit & 64bit OS and applications) Control software must be compatible and designed for eego amplifier



Front view amplifier, trigger in and output and EEG data transfer input (actual size). Trigger out not operational until further notice.



Back view amplifier, power supply and EEG data transfer output via USB 3 (actual size).

Designed for waveguard™ touch

The eego mini amplifiers work wonders together with the 8 channel waveguard touch caps. The active shielding technology eliminates noise and reduces artefacts for clean, dry EEG signals.

“The waveguard touch dry EEG cap provides quick setup times and good signal quality. This is especially important since we want to be able to test a lot of athletes, on a daily basis. With their limited time for the recordings, we have to finish complete sessions within just 20 minutes. Right now, we are doing up to 60 recordings a week with waveguard touch, and we are very happy to be able to make such rapid progress in our data collection.”

- Dr. Brian Murphy, Chief Scientific Officer - BrainWaveBank Ltd. - Belfast, Ireland



8-channel waveguard touch paired to an eego mini

eego™ amplifier is CE marked as a medical device in the EU, according to MDD 93/42/EEC, class IIa. waveguard™ caps are CE marked as medical device in the EU, according to MDD 93/42/EEC, class I. Manufactured by eemagine Medical Imaging Solutions GmbH, Berlin, Germany, ISO 13485 certified. ANT Neuro and eemagine are part of the neuromotion group.

The information in this document is not intended for users outside the European Union. For use outside the EU please send your inquiry to sales@ant-neuro.com

ANT Neuro b.v., Enschede, The Netherlands,
tel: +31 53 43 65 175, fax: +31 53 43 03 795,
internet: www.ant-neuro.com, e-mail: info@ant-neuro.com

Information in this document is subject to change.

www.ant-neuro.com/products/eego_mini_series



EN0118-1.0 ANT DRN-SLS-2405

eego™ mini-series

small package - great solutions



The fastest way to research grade EEG.



eego™ mini-series: small package - great solutions

With our eego 8 solutions, research grade quality EEG or EMG is now possible from your pocket or the palm of your hand. All eight referential or bipolar channels are protected from interference by our artefact suppression electronics (active shielding), to deliver you the highest quality EEG, EMG, ECG, or EOG signals on the go. And of course they are great for real-time applications such as BCI and neurofeedback.



Compatible with our dry electrode caps

If you love our dry electrodes as much as we do, you'll be happy to know that the eego 8 solutions are fully compatible with our waveguard™touch EEG cap. By combining these innovative technologies, you'll have your acquisition up and running in no time.

The advantages

- Our smallest and lightest solution for mobile high quality EEG recording
- Medically certified SDK for real-time data access
- Outstanding signal quality thanks to active shielding technology
- Great for real-time applications such as BCI, MoBI, Neurofeedback and Neuromarketing
- Both unipolar and bipolar setups available
- Multiple cap configurations
- Two trigger inputs
- Small device, humble price

Our solutions for you

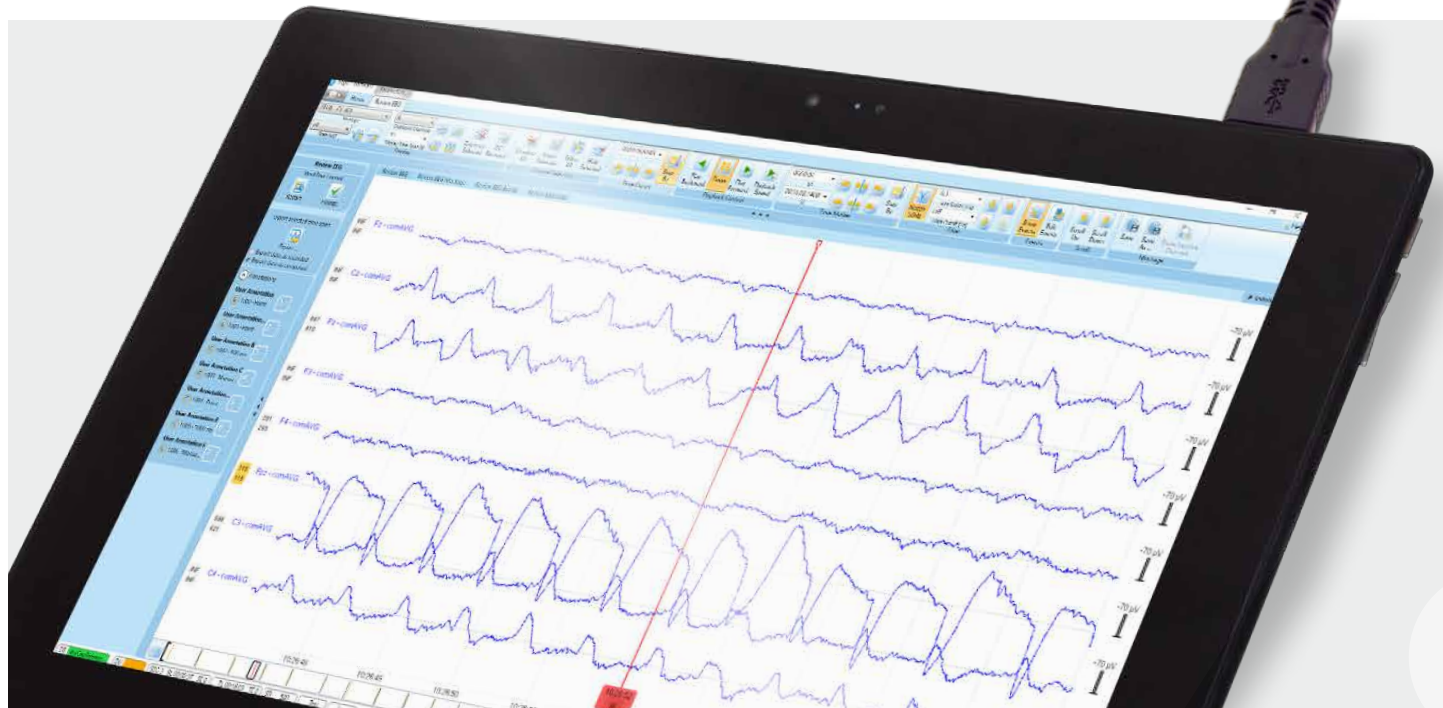
ANT Neuro is one step ahead of the curve and provides suitable solutions for a number of different applications.

eego™rt 8:

Our eego rt 8 solution is ideal for running BCI experiments or for integrating our hardware into your own software application. The SDK sets you up for a quick start of your research or development.

eego™sports 8:

The eego sports 8 extends our popular eego sports range. This solution provides you with everything you need to assess, capture, and analyze the brain in motion. Optimally suited for applications such as sports and movement sciences, performance optimization for athletes, neurorehabilitation, and Mobile Brain Imaging (MoBI).



Potential areas of applications



Neurofeedback



Brain training



Brain-computer interfaces



Certified SDK licence



Neuromarketing